

115

$A = 3$
 $B = 1$
 $B = 2$

Anslem (312)

116

$1 = -3$
 $2 = 0$
 $3 = 3$
 $4 = 6$
 $5 = 9$

Anslem: (2)

$6.5x = 6x^2 - 3x^2 = 1/2 x^2$
 $6x + 17x - 6x^2 - 3x^2 = 17x - 9x^2 = 17x - 9x^2$

Anslem: (2)

$2 + 3x < 0$
 $2 - 3x > -10$

$\begin{cases} 3x < -2 \\ -3x > -12 \end{cases}$

$3x < 0 + 9$
 $-3x > -10 - 2$

$\begin{cases} x < 3 \\ x < -1 \end{cases}$
 $x < -1$



11

$\frac{6}{1+\frac{1}{2}} = \frac{6 \cdot 2}{2+\frac{1}{2}} = \frac{12}{\frac{5}{2}} = 12 \cdot \frac{2}{5} = \frac{24}{5}$

Anslem: (6)

112

Anslem: (4)

113

$\sqrt{2x - \sqrt{5}} = \sqrt{2.5} = \sqrt{10}$
 $\sqrt{2x - \sqrt{5}} = \sqrt{10}$
 $2x - \sqrt{5} = 10$
 $2x = 10 + \sqrt{5}$
 $x = 5 + \frac{\sqrt{5}}{2}$

Anslem: (3)

$1001 + 1 = -8$
 $1002 = -8 - 1$
 $1003 = -9$
 $1004 = -9 - 10$
 $1005 = 0, 9$

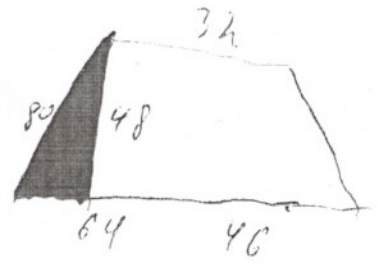
Anslem: (-6, 3)

118
 0104111
 119

11 - анал
 5 - пил
 21 - пробуждо
 Семени

$$\frac{21}{30} = \frac{21}{30} \cdot \frac{0,4}{0,4}$$

ответ: (0,4)
 1101



$$S = \frac{a+b}{2} \cdot h$$

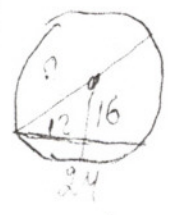
$$a = 32$$

$$h = 48$$

$$b = 64 + 46$$

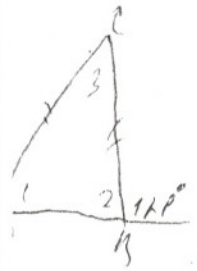
$$S = \frac{32 + 110}{2} \cdot 48 = 3 \cdot 408$$

ответ: (3408)
 110



~~$16^2 + 12^2 = 16^2 + 16 = 8$~~
 $16^2 + 12^2 = 400$
 $R = 20 \rightarrow D = 40$

ответ: (40)



$$\angle 2 = 180 - 111 = 59^\circ$$

$$\angle C = 180 - 59 - 59 = 62$$

(62)

n 12

$$\frac{3}{4} = 0,75$$

n 13

12

n 14

4

n 15

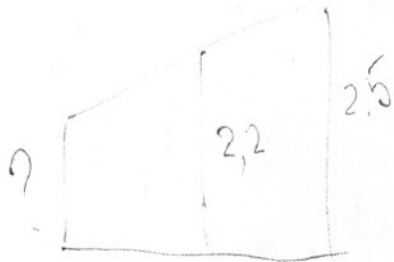
2

n 16

$$248 \rightarrow 50\% - 124$$

$$2 \cdot 248 + 3 \cdot 124 = 868$$

n 17



$$x = \frac{a + b}{2}$$
$$2,2 = \frac{x + 2,5}{2}$$
$$4,4 = x + 2,5$$

$$x = 4,4 - 2,5$$

$$x = 1,9$$

1,9